

HINE E HINE

to Marjon

traditional
arr. Jan Gerrit Adema

Andante

B: Soprano Sax

E: Alto Sax 1 - 2

B: Tenor Sax

E: Baritone Sax

E: Flugel

B: Flugel 1

B: Flugel 2

B: Flugel 3

F Horn 1 - 2

F Horn 3 - 4

B: Trumpet 1

B: Trumpet 2

B: Trumpet 3

C Trombone 1

C Trombone 2

C Trombone 3

B: Baritone

B: Euphonium

E: Bass

B: Bass

Timpani

Percussion 1

Percussion 2

Percussion 3

Solo
mf andante amabile

Hrn 1
mp molto espress.

Hrn 3
mp molto espress.

one player on top
mp teneramente

mp teneramente

Windmachine (all lib. plus cymbal spritz down on timp while changing pitch)
ppp whisper
Windchimes plus only upper part

ppp whisper
Susp. Cymb. (very soft sticks)

ppp whisper

B: Sopr. Sax

E: A. Sax 1 - 2

B: T. Sax

E: Bar. Sax

E: Flg.

B: Flg. 1

B: Flg. 2

B: Flg. 3

F Hrn. 1 - 2

F Hrn. 3 - 4

B: Trp. 1

B: Trp. 2

B: Trp. 3

C Trb. 1

C Trb. 2

C Trb. 3

B: Bar.

B: Euph.

E: Bass

B: Bass

Timp.

Perc. 1

Perc. 2

Perc. 3

A

mp molto espressivo

mp molto espressivo

mp molto espressivo

Cup mute a 1.
mf molto espressivo
a 1.
Cup mute
mf molto espressivo

Cup mute a 1.
mf molto espressivo

Cup mute
mf molto espressivo

Cup mute
mf molto espressivo

Cup mute
mf molto espressivo

a 1.
mp (very feelingly)

molto espressivo

low tuba play 8va bassa if appropriate, one only
molto espressivo

pp *p*

play *Sva* if no E. flugel/cornet

B: Sopr. Sax

E: A. Sax 1 - 2

B: T. Sax

E: Bar. Sax

E. Flg.

B: Flg. 1

B: Flg. 2

B: Flg. 3

F Hrn. 1 - 2

F Hrn. 3 - 4

B: Trp. 1

B: Trp. 2

B: Trp. 3

C Trb. 1

C Trb. 2

C Trb. 3

B. Bar.

B: Euph.

E: Bass

B: Bass

Timp.

Perc. 1

Perc. 2

Perc. 3

B

B: Sopr. Sax

E: A. Sax 1 - 2

B: T. Sax

E: Bar. Sax

E. Flg.

B: Flg. 1

B: Flg. 2

B: Flg. 3

F Hrn. 1 - 2

F Hrn. 3 - 4

B: Trp. 1

B: Trp. 2

B: Trp. 3

C Trb. 1

C Trb. 2

C Trb. 3

B. Bar.

B: Euph.

E: Bass

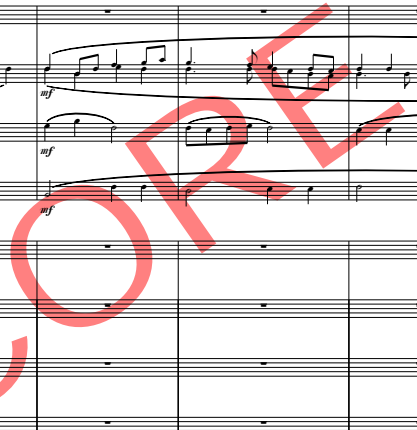
B: Bass

Timp.

Perc. 1

Perc. 2

Perc. 3



Open Cornet Solo

f molto cant.

Open

Open

Solo

f molto cant.

Crotales* (indefinite pitch)

pp very gently

p *mf*

* This is the most important colour element in the piece.
 Please use heavy, massive crotales with indefinite pitch.
 Make sure to achieve a warm, bright sound like a spark of light.
 If you only have pitched crotales strike *ff* with a stick with
 a copper beater. Remember to play very, very gently.

C

B: Sopr. Sax

E: A. Sax 1 - 2

B: T. Sax

E: Bar. Sax

E: Flg.

B: Flg. 1

B: Flg. 2

B: Flg. 3

F Hrn. 1 - 2

F Hrn. 3 - 4

B: Trp. 1

B: Trp. 2

B: Trp. 3

C Trb. 1

C Trb. 2

C Trb. 3

B: Bar.

B: Euph.

E: Bass

B: Bass

Timp.

Perc. 1

Perc. 2

Perc. 3

mf *f piu intenso*

f piu intenso

f piu intenso

f piu intenso

mf *f piu intenso*

Tutti *mf* *f piu intenso*

mf piu intenso

mf piu intenso

mf piu intenso

Tutti *mf* *f piu intenso*

mf *f piu intenso*

mf *f piu intenso*

mf

B: Sopr. Sax

E: A. Sax 1 - 2

B: T. Sax

E: Bar. Sax

E: Flg.

B: Flg. 1

B: Flg. 2

B: Flg. 3

F Hrn. 1 - 2

F Hrn. 3 - 4

B: Trp. 1

B: Trp. 2

B: Trp. 3

C Trb. 1

C Trb. 2

C Trb. 3

B: Bar.

B: Euph.

E: Bass

B: Bass

Timp.

Perc. 1

Perc. 2

Perc. 3

bring out

bring out

mf

bring out

bring out



D

Rit.

B: Sopr. Sax

E: A. Sax 1 - 2
bring out

B: T. Sax
ff

E: Bar. Sax

E: Flg.
ff

B: Flg. 1
ff

B: Flg. 2
ff

B: Flg. 3
ff

F Hrn. 1 - 2
fff

F Hrn. 3 - 4
fff

B: Trp. 1
ff

B: Trp. 2
bring out
ff

B: Trp. 3
bring out
ff

C Trb. 1
ff

C Trb. 2
ff

C Trb. 3
ff

B: Bar.
ff

B: Euph.
ff

E: Bass
ff

B: Bass
ff

Timp.
mf *ff* *mf* *p* *ff*

Perc. 1
Tam tam

Perc. 2
(medium beaters)
ff

Perc. 3
S.D.
ff *mf* *p* *ff*

B: Sopr. Sax

E: A. Sax 1 - 2

B: T. Sax

E: Bar. Sax
mp

E: Flg.

B: Flg. 1

B: Flg. 2

B: Flg. 3

F Hrn. 1 - 2

F Hrn. 3 - 4

B: Trp. 1

B: Trp. 2

B: Trp. 3

C Trb. 1

C Trb. 2

C Trb. 3

B: Bar.

B: Euph.
mp

E: Bass
mp

B: Bass
mp

Timp.
ff

Perc. 1

Perc. 2
(very soft sticks)
ff

Perc. 3
ff



**(Conductor please blend diminuendo into the sustained note of the 2nd trombone on the third beat. Hold this 3rd beat.)*

E Solo

B: Sopr. Sax *f*

E: A. Sax 1 - 2 *mp*

B: T. Sax *mp*

E: Bar. Sax

E: Flg. Solo *f*

B: Flg. 1 *f con calore*

B: Flg. 2

B: Flg. 3

F Hrn. 1 - 2 *f con calore*

F Hrn. 3 - 4 *f*

B: Trp. 1 Cup mute *mf andante teneramente*

B: Trp. 2 Cup mute *mf andante teneramente*

B: Trp. 3 Cup mute *mf andante teneramente*

C Trb. 1

C Trb. 2

C Trb. 3

B. Bar.

B: Euph. *f con calore*

E: Bass

B: Bass

Timp.

Perc. 1

Perc. 2 *mf*

Perc. 3

Molto rit.⁸ long

B: Sopr. Sax

E: A. Sax 1 - 2 *tenerezza*

B: T. Sax *tenerezza*

E: Bar. Sax *tenerezza*

E: Flg.

B: Flg. 1

B: Flg. 2

B: Flg. 3

F Hrn. 1 - 2 *tenerezza*

F Hrn. 3 - 4 *tenerezza*

B: Trp. 1

B: Trp. 2

B: Trp. 3 Cup mute *mf*

C Trb. 1 *mp teneramente*

C Trb. 2 Cup mute *mf* *mp teneramente tenerezza*

C Trb. 3 *mf* *a niente tenerezza*

B. Bar.

B: Euph. *a niente tenerezza*

E: Bass *tenerezza*

B: Bass *tenerezza*

Timp.

Perc. 1 *Crotales (indefinite pick)*

Perc. 2 *p (very soft sticks)*

Perc. 3 *(very feelingly like a brass)*

